

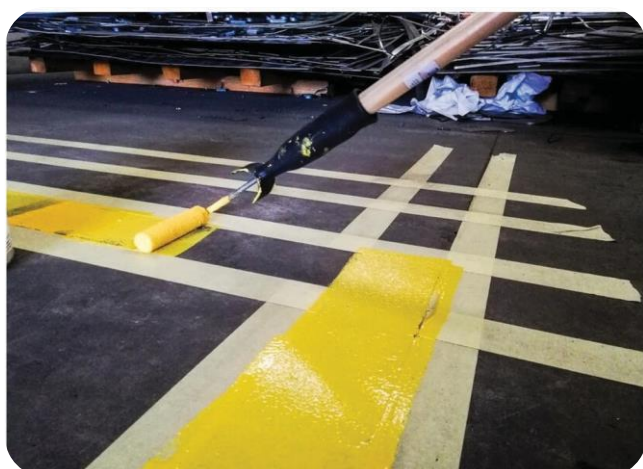
PROPERTIES:

This product is a copolymer of acrylic acid and acrylic and methacrylic acid esters modified by nanoparticles.

Application:

This product is recommended for production of traffic paints for mild and cold climates.

Here are some of the differences between nano-composite and usual thermoplastic acrylic resins.



Solubility:

- White spirit: partially soluble
- Aromatic: soluble
- Butyl acetate: soluble
- Methyl ethyl ketone: Soluble
- Alcohols: needs to be tested.

Specific characteristics:

- Great adherence to the surface
- High hardness
- Yellowing resistance.
- abrasion resistance
- scratch resistance

Miscibility:

- Thermoplastic Acrylic resins

Storage:

Keep way from direct sunlight and under 30 °C.

Stability:

Under aforementioned conditions: 9 months from production date.

Technical information:

Characteristics	Rang/Value	Unit	Ref.Standard
Appearance	Viscous Liquid		
Color	Less than 1	Gardner	
Percent Solid	60 + 1	%	ISO 2431
Acid Value	7 - 11	mg KOH/g	ISO 2114
Viscosity (D6/25°C/50 %AR)	55 - 90	s	ISO 2431

Resin	Product code	Scratch resistance	Abrasion resistance
Nano composite	resins	342AR60NA2	5 Kg 3.5 mg
Typical resin	340AR60	2.5 Kg	6.5 mg